

For
**INDUSTRIAL
PRODUCTS**

High-Performance
Flatbed UV Inkjet Printer

UJF-7151 plusII e

Mimaki

Add Texture. Add Depth.
Add Value. - Unlock new
dimensions in Industrial Printing



Mimaki
Green Technology



Add Texture. Add Depth. Add Value. - Unlock new dimensions in Industrial Printing

The UJF-7151 plusII e is a high-performance model that retains the high-quality printing up to 1800 dpi, highly precise positioning, heavy media compatibility, and stability evaluated in the previous model, the UJF-7151 plusII. It further pursues enhanced "Print Higher" and "Print Deeper" capabilities, along with improved productivity and reduced running costs.

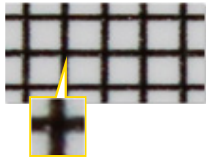


High-Quality, High-Precision Printing 1800 dpi maximum

Supports Up to 1800 dpi and 6 colors, including light colors

Equipped with 1800x1800 dpi mode*. Even detailed drawings and extremely fine text are reproduced beautifully and precisely. Furthermore, the six-color configuration including light colors (Lc and Lm), enables beautiful non-grainy printing with natural, elegant gradations.

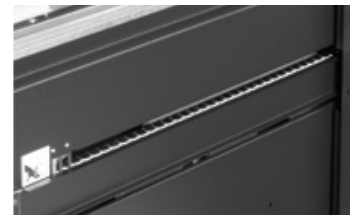
*6C+2SP ink set only



Ball screw mechanism

- A structure for realizing high-definition printing -

Ball screws located at both sides (x-axis) of the print table stabilize table drive during printing and help produce beautiful prints. Ball screws are also used at the z-axis side to achieve a table load capacity of 30 kg, allowing the use of heavy materials and high-precision jigs for industrial applications.



High Productivity Max. 8.0m²/h* productivity

An array of Eight staggered printheads achieves top-level productivity in the same product category. The printable area is 710x510 mm (28x20 in), enabling the printing of size 636x469 mm (25x18.5 in), which is often used for screen printing.

*Print conditions : 4C+4C 600x600 dpi; 6 Pass

» Printable area

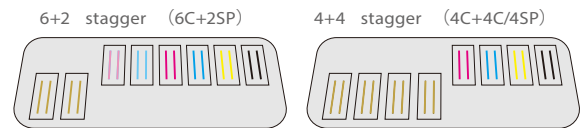


Optional 8-head/staggered arrangements

With an 8-head arrangement, you can select either 6 + 2 stagger (6C + 2SP) or 4 + 4 stagger (4C + 4C/4SP).

» Head arrangement

Head arrangement	Color set	Features
6+2 stagger	6C+2SP	High-quality printing with two spot colors added to the 6 colors C, M, Y, K, Lc and Lm
4+4 stagger	4C+4C	High volume production with high speed printing due to doubling the four colors C, M, Y and K
4+4 stagger	4C+4SP	Four colors C, M, Y and K as well as four spot colors enhance functionality and expressiveness.



*Head configuration is selectable at the time of installation, and later modification is also possible. Our service personnel perform such modifications.

Mimaki's technology for realizing stable operation Auto maintenance function to minimize downtime

NCU (Nozzle Check Unit)

The status of nozzles is automatically detected by the sensor. When the NCU detects a missing nozzle, it automatically performs cleaning to solve the problem.

Ink emission is determined to be defective in case of light permeation.

NRS (Nozzle Recovery System)

If there is still an unsolved problem after cleaning, the NRS automatically replaces the defective nozzles with other nozzles, which enables users to continue their operation without waiting for service representative. Nozzles that emit no ink are substituted by alternate nozzles. The system is automatically set based on the information provided by the NCU.

A defective nozzle that emits no ink is substituted by an alternate nozzle.

Ink circulation mechanism inside the head

Every head is equipped with an ink circulation mechanism that prevents pigment precipitation and removes bubbles from the ink (bubbles cause missing dots), which stabilizes printing and reduces the frequency of required cleaning and the running cost due to cleaning.

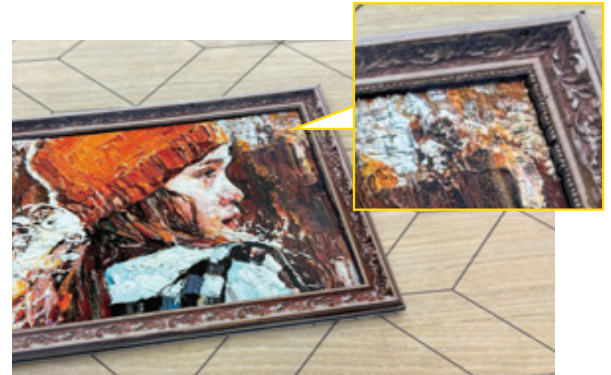
Implemented between transferred files (=jobs)

2.5D Embossed Printing

Up to 5 mm (0.2") Thick

The conventional 2.5D Texture Maker now features an Emboss Mode capable of printing up to 5 mm (0.2") in thickness. Accelerate added value and creativity.

*Embossed prints are prone to peeling and warping depending on the media and data shape. Print results may vary depending on the substrate and printing conditions, so carry out test printing in advance.



*Using ELS-120 ink

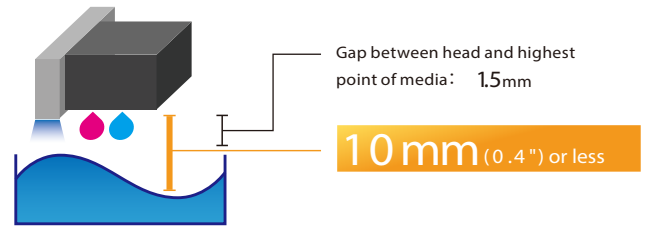
LD3 Mode Up to 10 mm (0.4") height differences

Height Difference Printing : LD Mode (Long Distance Mode)

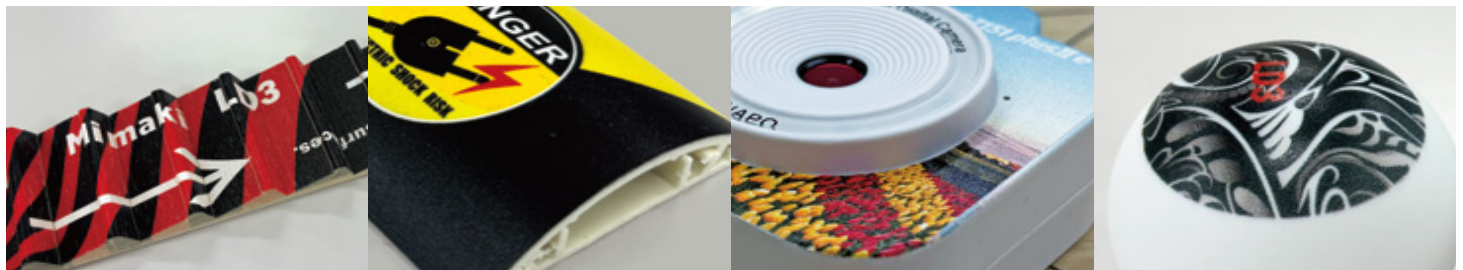
LD Mode is a printing mode that enables optimal printing even when the printing material surface has height differences. The UJF-7151 plus II e supports LD3 Mode, capable of printing at distances of up to 10 mm (0.4")* from the print head to the printing surface.

*Includes 1.5 mm head gap

LD3 Mode (Distance from print head to print area: 10 mm or less)



*Print results may vary depending on the substrate and printing conditions, so carry out test printing in advance.

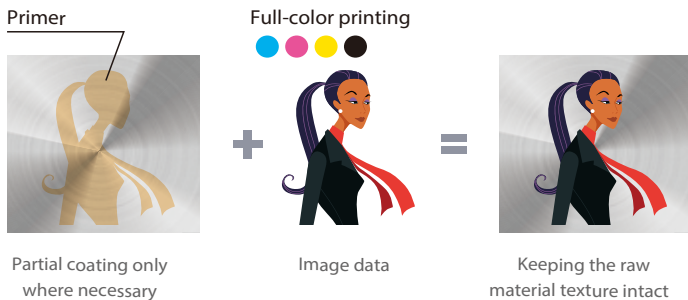


High-Speed Primer Function

Achieves Approx. 3.7 times the Previous Speed

The speed of primer printing, which enhances ink adhesion, has increased to approximately 3.7 times the previous rate, significantly boosting productivity.

Automatic coating with inkjet primer



Partial coating only where necessary

Image data

Keeping the raw material texture intact

Ink Saving Function

Reduce Ink Consumption with Just 2 Clicks

With just two clicks, the "Ink Saving Function" reduces running costs. It saves up to approx. 42% in ink consumption while maintaining natural color tones.

Adjustable in 5 steps from level-1 to level-5



Ink saving OFF (Default)

Ink saving Level 13 (Approx. 30% reduction)

Ink saving Level 15 (Approx. 42% reduction)



Nameplate (Full-color)

Card

Control panel

Welcome sign

Mock-up

Molded face sign

Combination of upgraded usability and functionality

RIP Software combining usability and high performance

Raster Link 7



Operate machine remotely

Achieve smooth and planned operations



MRA
(Mimaki Remote Access)

Mimaki Cloud Technology **PICT**

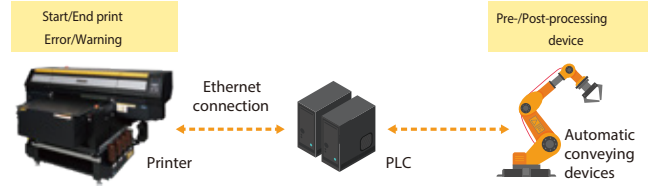
Compatible with Mimaki Software's centralized management software
"Mimaki Application Assistant (MA2)"

Improves efficiency

Automation of printing processes

Adaptable to "Mimaki Device Language (MDL)"
to realize automation of printing processes

Using MDL commands allows you to automate printer control, job management, and workpiece conveying device operation from an external device



*When using MDL commands, refer to the separate MDL commands manual included in the SDK.
*Please note that machine failures due to MDL commands may not be covered by our warranty.

Specifications

Item	UJF-7151 plusII e	
Print head	On-demand piezo head (8 staggered printheads)	
Print resolution	600 dpi / 900 dpi / 1200 dpi / 1800 dpi	
Ink	Type	UV curable ink: LH-100 / ELH-100 / LUS-120 / ELS-120 / LUS-350 / MUH-100-Si / PR-200
	Color	C / M / Y / K / Lc / Lm / W / Cl / Si / Pr (Primer)
	Ink supply	1 L / 250 ml / 200 ml bottle*
Maximum printable area	710 × 510 mm (28 × 20 in)	
Media	Size	730 × 530 mm (28.7 × 20.9 in) or less
	Thickness	153 mm (6 in) or less
	Weight	30 kg (66 lb) or less
Interface	USB2.0 / Ethernet 1000 BASE-T	
Certifications	VCCI class A, FCC class A, ETL IEC 62368-1, CE Marking (EMC, Low voltage, Machinery directive, and RoHS), CB, REACH, EAC, RCM	
Power supply	Single phase AC100-120/200-240V±10 % , 50/60Hz±1Hz	
Power consumption	1,300 VA or less	
Operational environment	Temperature	15 - 30 degC (59 - 86 degF)
	Humidity	35-65% Rh (No condensation)
	Recommended Temperature	20 - 25 degC (68 - 77 degF)
	Temperature change	±10 degC/h or less
	Dust level	Equivalent to a general office floor level
Dimensions (WxDxH)	2,203 × 1,572 × 1,293 mm (87 × 62 × 51 in)	
Installation area	2,803 × 2,580 mm (110 × 102 in)	
Weight	330 kg (728 lb) Base stand weight is included.	

* For LH-100, ELH-100, LUS-120, ELS-120 and PR-200, 1 L and 250 ml bottles are available.
* Only the 1 L bottle is available for the LUS-350, and only the 200 ml bottle for the MUH-100-Si.

Options

Item	Item code	Remark
Pilot lamp	OPT-J0398	Indicator light
Vacuum unit	OPT-J0419	Additional vacuum
UJF-7151 plusII OP Ionizer	OPT-J0518	To eliminate static electricity
UJF-7151 plusII Full cover OP	OPT-J0520	For noise reduction, safety, dust control
OP Air filter	OPT-J0515	Installation outside the main unit. Requires OPT-J0520 UJF-7151 PlusII Full cover option for use.
Kebab HS	OPT-J0528	For printing on cylindrical materials

Inks and substrates:

- As physical properties of ink (adhesion, weather resistance etc.) are different depending on media, please be sure to have a print test in advance.
- Depending on the application, primers, other surface treatment or surface protection such as lamination may be necessary.

- Some of the samples in this catalog are artificial renderings.
- Specifications, design and dimensions stated in this catalog may be subject to change without notice (for technical improvement, etc.). The corporate names and merchandise names written on this catalog are the trademark or registered trademark of the respective corporations.
- Inkjet printers print using extremely fine dots, so colors may very slightly vary after replacement of the printing heads. Also note that if using multiple printer units, colors could vary slightly from one unit to other unit due to slight individual differences.
- The specifications described in this catalog are as of November 2025.

Supply

Item	Item No.	Remark
LH-100	Cyan	LH100-C-BA
	Magenta	LH100-M-BA
	Yellow	LH100-Y-BA
	Black	LH100-K-BA
	White	LH100-W-BA
	Clear	LH100-CL-BA
	Light Cyan	LH100-LC-BA
ELH-100	Light Magenta	LH100-LM-BA
	Cyan	ELH100-C-BA
	Magenta	ELH100-M-BA
	Yellow	ELH100-Y-BA
	Black	ELH100-K-BA
	White	ELH100-W-BA
	Clear	ELH100-CL-BA
LUS-120	Light Cyan	ELH100-LC-BA
	Light Magenta	ELH100-LM-BA
	Cyan	LUS120-C-BA
	Magenta	LUS120-M-BA
	Yellow	LUS120-Y-BA
	Black	LUS120-K-BA
	White	LUS120-W-BA
ELS-120	Clear	LUS120-CL-BA
	Light Cyan	LUS120-LC-BA
	Light Magenta	LUS120-LM-BA
	Cyan	ELS120-C-BA
	Magenta	ELS120-M-BA
	Yellow	ELS120-Y-BA
	Black	ELS120-K-BA
LUS-350	White	ELS120-W-BA
	Clear	ELS120-CL-BA
	Light Cyan	ELS120-LC-BA
	Light Magenta	ELS120-LM-BA
	Cyan	LUS35-C-BA
MUH-100-Si	Magenta	LUS35-M-BA
	Yellow	LUS35-Y-BA
	Black	LUS35-K-BA
	White	LUS35-W-BA
	Clear	LUS35-CL-BA
UJ Primer PR-200	PR200-Z-BA	1L bottle
Flushing liquid 07	ML007-Z-BA	1L bottle
Maintenance 15 100ml bottle	ML015-Z-B1	100ml bottle
Maintenance 15 kit	ML015-Z-K1	Maintenance kit with 2 pcs. of 100ml bottle

* GREENGUARD Gold-certified inks are LH-100, ELH-100, LUS-120 and ELS-120.

* SVHC-free ink is ink that does not contain SVHC and CMR, chemical substances that are considered to pose extremely high concerns for human health and the environment.

Safety notice:

- This product is equipped with UV irradiation equipment. Please pay attention to the following notes in order to use safely.
- Do not look directly into the UV light source nor place your hand, or expose your skin directly to the UV light source.
- Depending upon print mode, some VOC emittance from printed parts not yet cured and hardened may occur.
- In addition, please be sure to read and follow the instructions and guidelines of the manual carefully.