

Mimaki™

HIRSCH
SOLUTIONS

Roll to Roll UV-LED Inkjet Printer

UJV200 series
UJV200-160 / UJV200-130

High-Quality Printing Made Easier





Quality

Superior
Image
Quality



Precise control of ink droplets as small as 4 pl

Each ink droplet is placed exactly where intended, delivering high-quality images

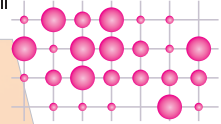
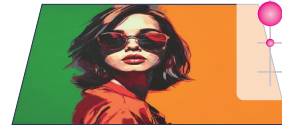
Beautiful solid fills with high-density ink

Three precisely controlled droplet sizes are combined to produce smooth, even solid areas. Larger droplets provide coverage, while smaller dots refine details to create rich gradations and

HEAD



● Large ● Middle ● Small



Ease of Use

Achieve *optimal image quality*
with *ease* —no expertise required.

DAS has evolved!

DAS2 (Dot Adjustment System 2)

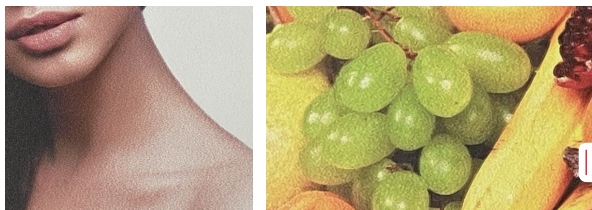
With one-touch automatic adjustment, results are consistent regardless of the operator's skill level.

Faster adjustment

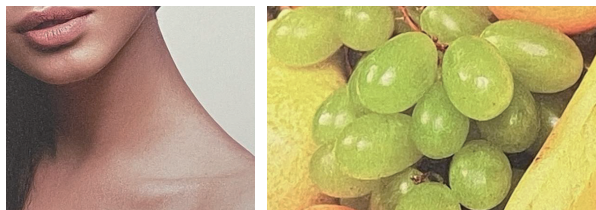
Less media used for adjustment

Works on colored and transparent media

Before adjustment



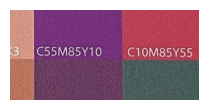
After adjustment



テストプリントですとぶりと試験印刷 TESTPRINT テストプリントですとぶりと試験印刷 TESTPRINT テストプリントですとぶりと試験印刷 TESTPRINT テストプリントですとぶりと試験印刷 TESTPRINT



テストプリントですとぶりと試験印刷 TESTPRINT テストプリントですとぶりと試験印刷 TESTPRINT テストプリントですとぶりと試験印刷 TESTPRINT テストプリントですとぶりと試験印刷 TESTPRINT



Versatility

Expand Your Business with Diverse Applications



Brings designs to life on large signage



Wallpaper



Floor Signage

Supports up to 3-layer printing (including white and clear) for high-value, premium output.



Backlit Signage 3-layer printing: Color / White / Color for consistent color day and night.



Window Graphics 2-layer (Color + White) or 3-layer printing with Clear.

Next-generation UV ink that's even safer for people and the environment



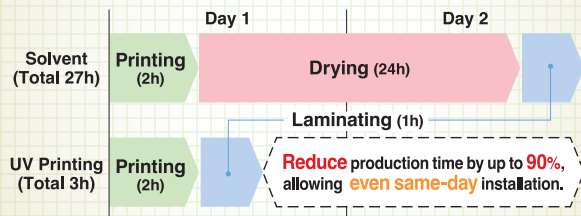
Approximately **30%** less odor than previous inks for an improved user experience.

SVHC-Free*1

CMR-Free**2 *3

*1 Substances of Very High Concern (SVHC), which may pose significant risks to human health and the environment
*2 Substances classified as Carcinogenic, Mutagenic, or Reprotoxic (CMR)
*3 Indicates that as of March, 2026, it is not classified in the CMR category as an ink under the EU-CLP Regulation.

UV printing eliminates the drying process, enabling fast turnaround times



Reliable print speed

4Color

Practical **151 ft²/h**

Single-layer printing

Practical **75 ft²/h**

PVC/Banner/Synthetic paper (-160 model)

Simple Design

Single Print Head for Easy Maintenance



The single print head system reduces cleaning and adjustment time. Its straightforward design enables quick and easy operation.

Wide-Opening Cover for Easy Maintenance

Upward-Facing Control Panel for Easy Operation

Easy-to-Use Design Software for Everyone

Simple Create

Intuitive operation — no manual needed

Output supported from Simple Create

Compatible with Windows, macOS, iOS, and Android

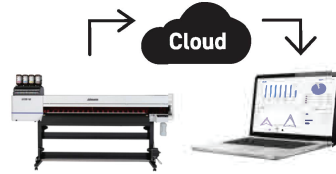


Cloud-based monitoring tool that supports operational efficiency and reliability.



PICT automatically collects operating status, ink usage, and error information, enabling accurate remote monitoring of printers and supporting more efficient business operations.

- Production Management
- Ink Refill Planning
- Maintenance Scheduling etc...



Software to support your workflow from design to output (included as standard)



Supports high print quality and easy operation

- Ink Saving Function - Easy for anyone to use.
- Supports cut data output to our entry-level CG-AR series cutting plotters.



■ Specifications

Item	UJV200-160	UJV200-130
Print Head	On-demand piezo head	
Print Resolution	Y: 600, 900, 1,200 dpi X: 600, 1,200 dpi	
Head Gap	2 Levels by manual (1.5 mm / 2.0 mm)	
Media	Size	Width: 210 – 1,620 mm (8.3 – 63.8")
	Maximum Print Width	1,610 mm (63.4")
	Outer dia.	φ180 mm (7.1") or less
	Roll Weight	25 kg (55.1 lb) or less
	Core dia.	2 inches, 3 inches
Interface	USB2.0 / Ethernet 1000BASE-T	
Power Specifications	Single-phase AC 100–120 V ±10% / 11 A, Single-phase AC 200–240 V ±10% / 5.5 A, 50/60±1Hz	
Power Consumption	Max. 1,320 W / Standard 550 W / Min. 4.5 W or less	
Operational Environment	Temperature	20 – 30 degC (68 – 86 degF)
	Humidity	35 – 65 % RH (no condensation)
	Accuracy Guaranteed Temperature Range	20 – 25 degC (68 – 77 degF)
	Dust Level	0.15 mg/m ³ (equivalent to a typical office environment)
Dimensions (W x D x H)	2,770 x 748 x 1,405 mm (109 x 29.4 x 55.3")	2,520 x 748 x 1,405 mm (99.2 x 29.4 x 55.3")
Unit Weight	160 kg (352 lb)	155 kg (341 lb)

■ Ink

Item	Color	Item Code	Remarks
ELS-170 (GREENGUARD Gold Certified Ink)	Cyan	ELS170-C-BA	1 L Bottle
	Magenta	ELS170-M-BA	
	Yellow	ELS170-Y-BA	
	Black	ELS170-K-BA	
	White	ELS170-W-BA	
ELS-175 (GREENGUARD Gold Certified Ink)	Clear	ELS170-CL-BA	
	Cyan	ELS175-C-BA	
	Magenta	ELS175-M-BA	
	Yellow	ELS175-Y-BA	
	Black	ELS175-K-BA	
LUS-210 (GREENGUARD Gold Certified Ink)	White	ELS175-W-BA	
	Clear	ELS175-CL-BA	
	Cyan	LUS21-C-BA	
	Magenta	LUS21-M-BA	
	Yellow	LUS21-Y-BA	
	Black	LUS21-K-BA	
	White	LUS21-W-BA	
	Clear	LUS21-CL-BA	

The ELS-170, 175 and LUS-210 have acquired "GREENGUARD Gold certification", which is guaranteed to be suitable for schools and medical institutions based on the strictest chemical substance diffusion standards in the world. This ink generates almost no VOC^(*)(²), which is the cause of photochemical oxidant generation, and is designed to reduce load to the global environment.



- *1 : VOC=Volatile organic compounds
- *2 : No volatile organic compounds are generated after UV curing by our internal investigation, but may occur very slightly before curing.

■ Print speed (PVC/Banner/ Synthetic paper)

1. 4 Color Ink Set			
	Print mode	-160 model	-130 model
High Quality	1200 x 1200 / 8pass	7.0m ² /h (75.3sqft/h)	6.0m ² /h (64.6sqft/h)
Quality	1200 x 600 / 6pass	10.0m ² /h (107.6sqft/h)	9.0m ² /h (96.9sqft/h)
Standard	600 x 600 / 6pass	14.0m ² /h (150.7sqft/h)	13.0m ² /h (139.9sqft/h)
High Speed	600 x 600 / 5pass	19.0m ² /h (204.5sqft/h)	18.0m ² /h (193.8sqft/h)
Draft	600 x 600 / 4pass	25.0m ² /h (269.1sqft/h)	22.0m ² /h (236.8sqft/h)
2. 4 Color+SP Ink Set			
	Print mode	-160 model	-130 model
High Quality	1200 x 1200 / 16pass	3.5m ² /h (37.7sqft/h)	3.0m ² /h (32.3sqft/h)
Quality	1200 x 600 / 12pass	5.0m ² /h (53.8sqft/h)	4.0m ² /h (43.1sqft/h)
Standard	1200 x 600 / 8pass	7.0m ² /h (75.3sqft/h)	6.0m ² /h (64.6sqft/h)
High Speed	900 x 600 / 8pass	9.3m ² /h (100.1sqft/h)	8.5m ² /h (91.5sqft/h)
Draft	600 x 600 / 8pass	12.0m ² /h (129.2sqft/h)	11.0m ² /h (118.4sqft/h)

- * Speeds shown are for single-layer printing. With 2(4Color+SP), speeds for 2-layer printing are approximately half of the values shown above.
- * Draft mode is not available for PVC.

■ Options

Item	Item Code	Remarks
Leveling Foot	OPT-J0502	Supports media weights of up to 45 kg.
NCU	OPT-J0422	
Ionizer 1600	OPT-J0457	
Ionizer 1300	OPT-J0463	
UJV200 Ionizer Connection Kit	OPT-01038	



High Performance RIP Software

⚠ Inks and substrates:

- For safe and reliable operation, please check media compatibility in advance
- As physical properties of ink (adhesion, weather resistance etc.) are different depending on media, please be sure to have a print test in advance.
- Depending on the application, primers, other surface treatment or surface protection such as lamination may be necessary.

⚠ Safety notice:

- This product is equipped with UV irradiation equipment. Please pay attention to the following notes in order to use safely.
- Do not look directly into the UV light source nor place your hand, or expose your skin directly to the UV light source.
- During UV curing printing, some odor may occur. Ensure adequate ventilation at all time
- Depending upon print mode, some VOC emittance from printed parts not yet cured and hardened may occur.
- In addition, please be sure to read and follow the instructions and guidelines of the manual carefully.

•Some examples shown in this catalog are artificial renderings. •Specifications, designs and dimensions shown in this catalog may be subject to change without notice for technical improvements. •The corporate and merchandise names in this catalog are the trademarks or registered trademarks of the respective corporations. •Inkjet printers use extremely fine dots, so colors may vary slightly after replacement of print heads. •Also note that when using multiple printer units, colors could vary slightly from one unit to another due to slight individual differences. •Please note that descriptions and data in this catalog are as of March 2026.

UJV200 Series



ROLL-TO-ROLL UV-LED INKJET PRINTER

64"

54"

High-Quality Printing Made Easier

UV-LED roll-to-roll printer with high image quality, simple operation, and stable output.

- High-quality printing
- Auto media feed alignment and adjustment
- Adjustable ink level adjustment
- Faster cleaning cycles
- New ELS-170 ink (meets or exceeds the EU- REACH regulations)
- Sharper fine lines and solid colors
- New Lami-Fit technology
- Print up to 3 layers without pull-back
- Reliable quality and performance even at speed
- Low odor, fast curing and eco-friendly



WWW.HSI.US | CARE@HSI.US | 800.394.4426

Order Consumables & Accessories From Hirsch shop.hsi.us



Mimaki® UJV200 Series

Printhead	Single on-demand piezo head
Print resolution	Y: 600 dpi, 900 dpi, 1200 dpi X: 600 dpi, 1200 dpi
Print speed (4 color mode)	UJV200-160: Draft: 269.1 sqft/hr (25.0 sqm/hr); Standard: 150.7 sqft/hr (14.0 sqm/hr) UJV200-130: Draft: 236.8 sqft/hr (22.0 sqm/hr); Standard: 139.9 sqft/hr (13.0 sqm/hr)
Maximum print width	UJV200-160: 63.4 in (1610 mm) UJV200-130: 53.5 in (1360 mm)
Media Thickness	Up to 2 mm
Media Weight	Max 55 lbs (25 kg) roll weight
Ink Type/Color	ELS-170 ink sets CMYK, CMYK CMYK, CI, CI, W, W CMYK, W, W (*ELS-175/ *LUS-210 *LATAM Market Only)
Ink Package Size	1 L Bottle
Interface	(Recommended) Ethernet 1000BASE-T USB 2.0 Hi-Speed
Power Supply	AC100-120V (11A) or AC200-240V (5.5A)
Power Consumption	Max 1320W Standard 550W Min 4.5W
Operational Environment	Temperature: 68 - 86 °F (20-30 °C) Humidity: 35 - 65% Recommended temperature: 68 - 77 °F (20-25 °C) Dust level: General office level
Dimensions (W x D x H)	UJV200-160: 109.1 in x 29.4 in x 55.3 in (2770 mm x 748 mm x 1405 mm) UJV200-130: 99.2 in x 29.4 in x 55.3 in (2520 mm x 748 mm x 1405 mm)
Weight	UJV200-160: 352 lb (160 kg); UJV200-130: 342 lb (155 kg)
Options	<ul style="list-style-type: none"> • OPT-J0422 - NCU • OPT-J0502 - Leveling Foot - Supports media weights up to 45 kg • OPT-J0545 - Ionizer 1600 • OPT-01038 - UJV200 Ionizer OPT Connection Kit
Certifications	IEC 62368 1, CE (EMC, Low Voltage, Machinery Directive, RoHS), REACH, VCCI Class A, FCC Class A, RCM, EAC, ENERGY STAR

ROLL-TO-ROLL UV-LED INKJET PRINTER

64"

54"



WWW.HSI.US | CARE@HSI.US | 800.394.4426

Order Consumables & Accessories From Hirsch shop.hsi.us

